

Vitality in full

view





Day view

IDEAL AQUAVIEW

WELCOME TO THE WONDER

of 535.5 cottahs, overlooking **one of Kolkata's largest waterbodies**. Escape the bustle of city life at the heart of it. Choose from 980 aesthetically designed air-conditioned apartments of 2,3 & 4 BHK spread across 7 towers. Drift easily to your world of eternal tranquility.



Choose from 980 luxurious 2, 3 & 4 BHK units



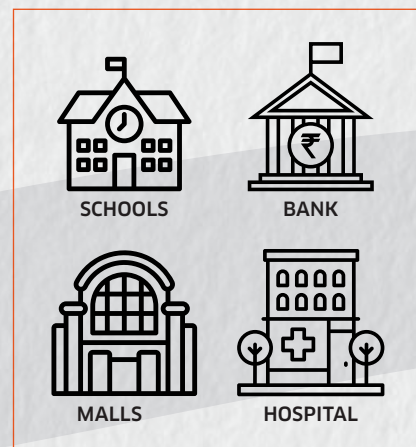
Map not to scale

Landmarks near the project

- Apollo Hospital 7.4 km
- Tata Medical 5 km
- Newtown School 3.4 km
- CC2 10 km

BEST OF BOTH WORLDS

located away from the chaos of the city, but in the midst of it as a sanctuary. Enjoy the **unique locational advantage** of all modern utility points, top-end schools, business districts, banks, hospitals, malls and multiplexes in close vicinity.



Find **New Town and Sector V** in close neighbourhood, with Ideal Aquaview situated on the new six-lane road connecting the two. Fly out in a jiffy with the airport only a 15-minute drive.



83% open space

VIEWS HERE WOW



Cozy up to nature

when you look out to the landscaped garden dotted with specially planted trees, flowers and well-designed fountains decorating your sight. Mother nature nurtures better in the **83% green and open space** at Ideal Aquaview. Let your private lush gardens heal you, and the **grand view of the azure waterbody** take your breath away.



Feature-packed residents' club

RELAX AND REVIVE

with a host of amenities that let you experience life at its very best. Breathe easy with the **wellness facilities at H2O Club**. Get your game on at the **indoor Badminton and Squash Courts**. Be bowled over by happiness at the **13,670 sq ft Cricket Field**. Dive into summer's delights in the **Indoor and Outdoor Pools**. Play the enviable host to special occasions at an expansive **11,200 sq ft Banquet Area with Rooftop Banquet Garden of 9800 sq ft**.



Swimming pool



Night view

SAFE FOR YOU AND THE ENVIRONMENT



Robust security with men in uniform

so that your time with your loved ones is a well-protected treasure. Men in uniform, other gadgets and technologies ensure your **safety round the clock.** Stay in an **environmentally sensitive space** with Ideal Aquaview boasting water conservation through various measures like rainwater harvesting, sewage treatment plants and recycling of water.



SITE MAP

- 1 WATER-WALL FEATURE
- 2 CRICKET FIELD
- 3 SEATING ALCOVE
- 4 WALKING TRACK
- 5 GALLERY
- 6 SWIMMING POOL
- 7 COVERED SWIMMING POOL
- 8 KIDS' POOL
- 9 STAGE
- 10 LAWN
- 11 PLAZA
- 12 KIDS' PLAY AREA
- 13 FITNESS CORNER
- 14 BEACH VOLLEYBALL
- 15 BADMINTON COURT
- 16 YOGA DECK





**ALBATROSS & BARBET
TYPICAL FLOOR PLAN
1-25 Floor**



| FLAT | BALCONY AREA |
|------|--------------|
| A | 43 sq ft |
| B | 43 sq ft |
| C | 33 sq ft |
| D | 43 sq ft |
| E | 43 sq ft |
| F | 33 sq ft |

| FLAT | CARPET AREA |
|------|-------------|
| A | 965 sq ft |
| B | 968 sq ft |
| C | 687 sq ft |
| D | 964 sq ft |
| E | 968 sq ft |
| F | 669 sq ft |

| FLAT | TYPE | SBU AREA |
|------|-------|------------|
| A | 3 BHK | 1485 sq ft |
| B | 3 BHK | 1475 sq ft |
| C | 2 BHK | 1085 sq ft |
| D | 3 BHK | 1485 sq ft |
| E | 3 BHK | 1475 sq ft |
| F | 2 BHK | 1080 sq ft |



**CRANE
TYPICAL FLOOR PLAN
1-21 Floor**



| FLAT | BALCONY AREA |
|------|--------------|
| A | 43 sq ft |
| B | 43 sq ft |
| C | 33 sq ft |
| D | 43 sq ft |
| E | 43 sq ft |
| F | 33 sq ft |

| FLAT | CARPET AREA |
|------|-------------|
| A | 965 sq ft |
| B | 968 sq ft |
| C | 687 sq ft |
| D | 964 sq ft |
| E | 968 sq ft |
| F | 669 sq ft |

| FLAT | TYPE | SBU AREA |
|------|-------|------------|
| A | 3 BHK | 1485 sq ft |
| B | 3 BHK | 1475 sq ft |
| C | 2 BHK | 1085 sq ft |
| D | 3 BHK | 1485 sq ft |
| E | 3 BHK | 1475 sq ft |
| F | 2 BHK | 1080 sq ft |



DUCK
TYPICAL FLOOR PLAN
1-21 Floor



| FLAT | BALCONY AREA |
|------|--------------|
| A | 45 sq ft |
| B | 45 sq ft |
| C | 45 sq ft |
| D | 45 sq ft |

| FLAT | CARPET AREA |
|------|-------------|
| A | 1259 sq ft |
| B | 1261 sq ft |
| C | 1259 sq ft |
| D | 1259 sq ft |

| FLAT | TYPE | SBU AREA |
|------|-------|------------|
| A | 4 BHK | 1950 sq ft |
| B | 4 BHK | 1950 sq ft |
| C | 4 BHK | 1950 sq ft |
| D | 4 BHK | 1950 sq ft |



**EGRET & FLAMINGO
TYPICAL FLOOR PLAN
1-25 Floor**



| FLAT | BALCONY AREA |
|------|--------------|
| A | 43 sq ft |
| B | 43 sq ft |
| C | 33 sq ft |
| D | 43 sq ft |
| E | 43 sq ft |
| F | 33 sq ft |

| FLAT | CARPET AREA |
|------|-------------|
| A | 975 sq ft |
| B | 977 sq ft |
| C | 670 sq ft |
| D | 975 sq ft |
| E | 979 sq ft |
| F | 688 sq ft |

| FLAT | TYPE | SBU AREA |
|------|-------|------------|
| A | 3 BHK | 1510 sq ft |
| B | 3 BHK | 1505 sq ft |
| C | 2 BHK | 1085 sq ft |
| D | 3 BHK | 1510 sq ft |
| E | 3 BHK | 1505 sq ft |
| F | 2 BHK | 1090 sq ft |



**GARNET
TYPICAL FLOOR PLAN
1-25 Floor**



| FLAT | BALCONY AREA |
|------|--------------|
| A | 43 sq ft |
| B | 43 sq ft |
| C | 33 sq ft |
| D | 43 sq ft |
| E | 43 sq ft |
| F | 34 sq ft |

| FLAT | CARPET AREA |
|------|-------------|
| A | 974 sq ft |
| B | 977 sq ft |
| C | 644 sq ft |
| D | 974 sq ft |
| E | 977 sq ft |
| F | 700 sq ft |

| FLAT | TYPE | SBU AREA |
|------|-------|------------|
| A | 3 BHK | 1510 sq ft |
| B | 3 BHK | 1505 sq ft |
| C | 2 BHK | 1050 sq ft |
| D | 3 BHK | 1510 sq ft |
| E | 3 BHK | 1505 sq ft |
| F | 2 BHK | 1105 sq ft |



**GARNET
GROUND FLOOR PLAN**



| FLAT | BALCONY AREA |
|------|--------------|
| B | 43 sq ft |
| C | 33 sq ft |
| D | 43 sq ft |

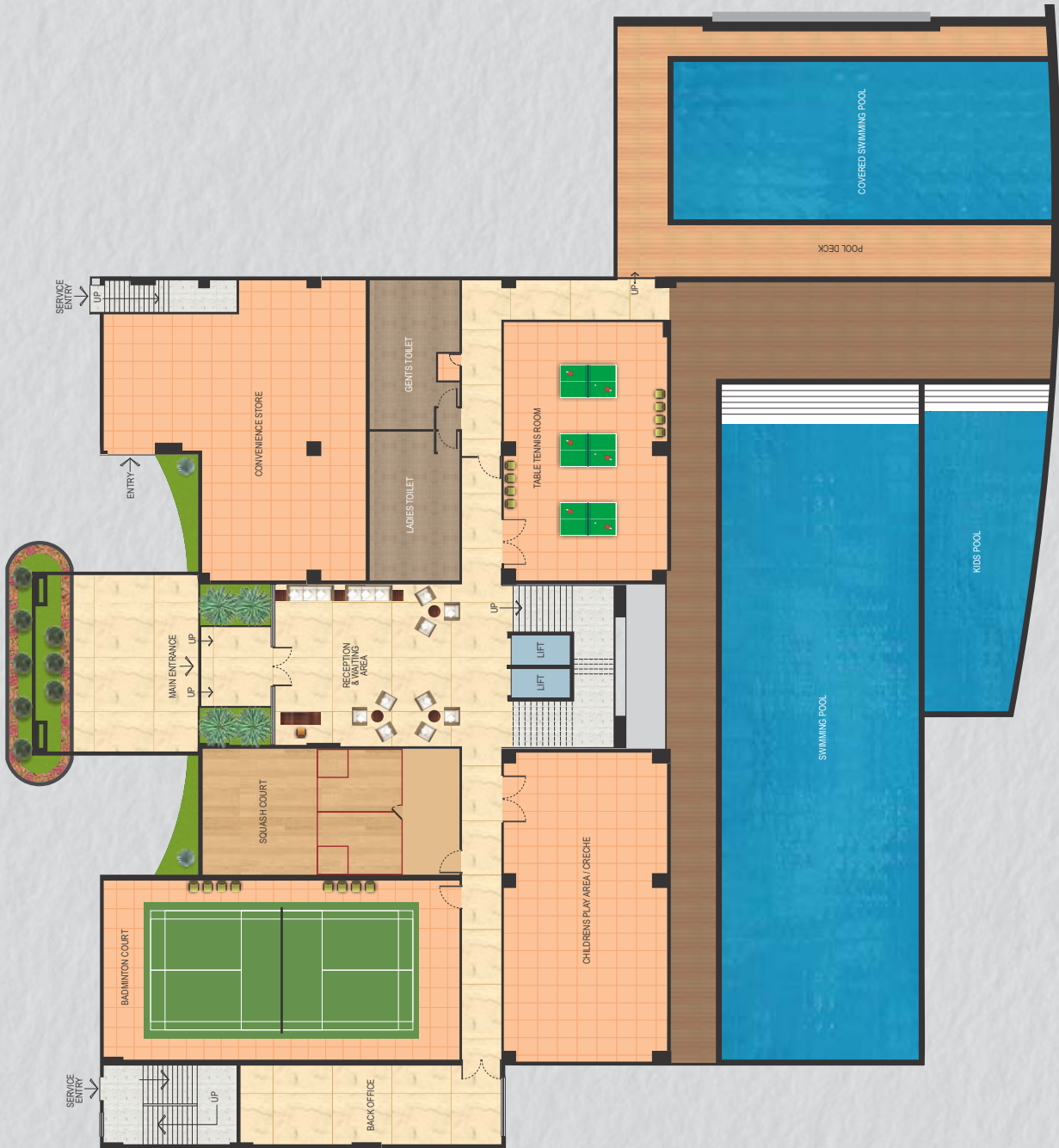
| FLAT | CARPET AREA |
|------|-------------|
| B | 977 sq ft |
| C | 644 sq ft |
| D | 974 sq ft |

| FLAT | TYPE | SBU AREA |
|------|-------|------------|
| B | 3 BHK | 1505 sq ft |
| C | 2 BHK | 1050 sq ft |
| D | 3 BHK | 1510 sq ft |

GARDEN AREA

- B 520 sq ft
- C 405 sq ft
- D 695 sq ft

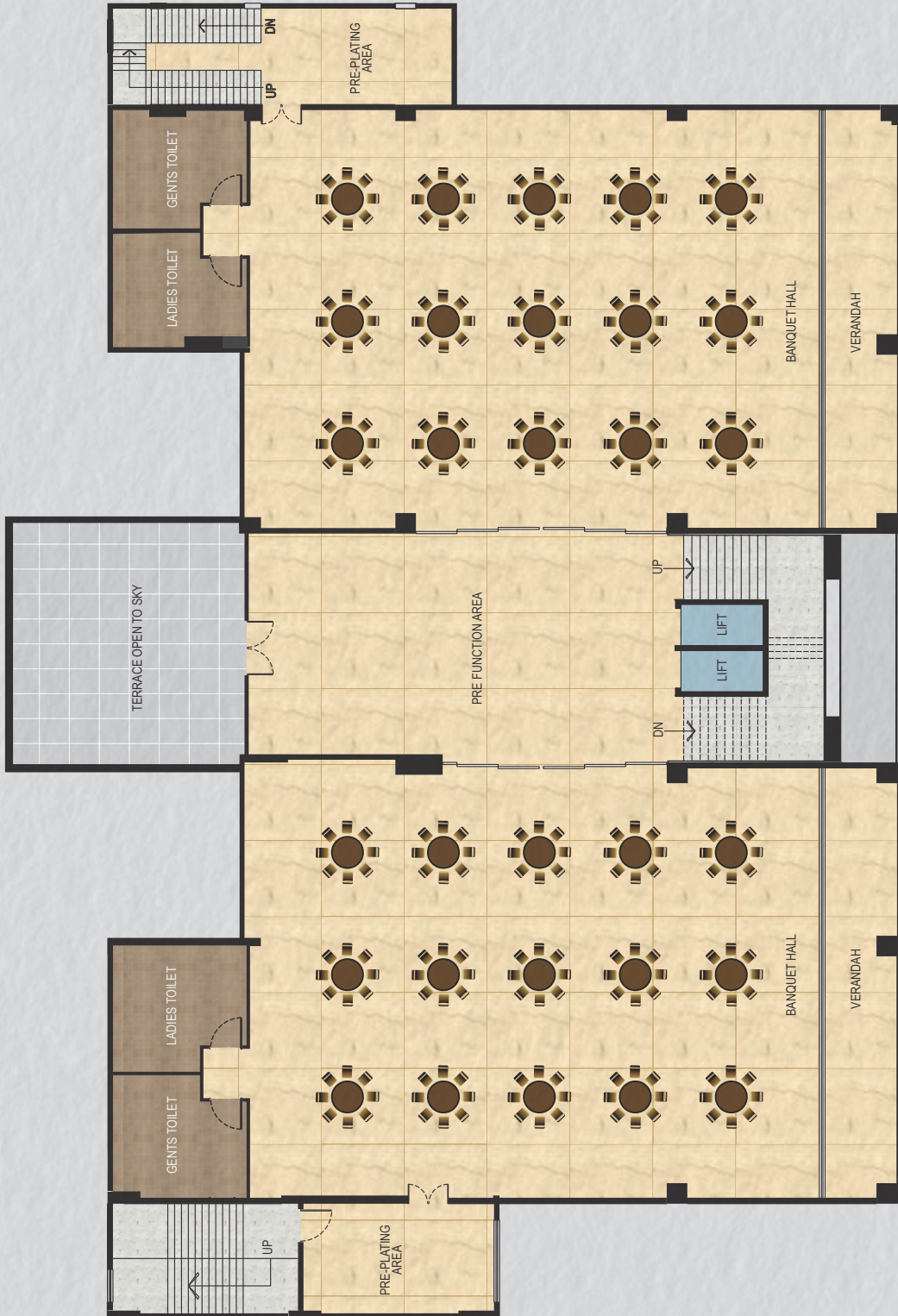
H2O - THE CLUB GROUND FLOOR PLAN



H2O - THE CLUB
FIRST FLOOR PLAN



H2O - THE CLUB
SECOND FLOOR PLAN



H2O - THE CLUB
ROOF TOP BANQUET
GARDEN PLAN





Stesalit Towers,
Office #7, 4th floor
Plot No E2-3, Block - EP & GP,
Sector V, Salt Lake,
Kolkata - 700091
Phone : 9073338396

SITE ADDRESS

IDEAL AQUAVIEW
Maheshbathan Ward No# 28,
Kolkata 700 102 Adjacent to Sector V
HIRA/P/NOR/2018/000192